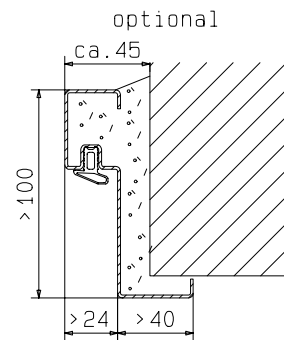
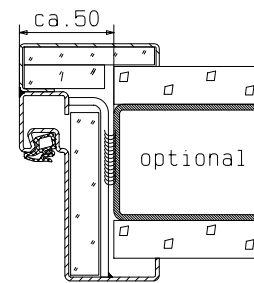


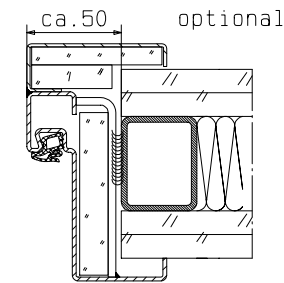
Hauptzarge
"ZG 68/76"



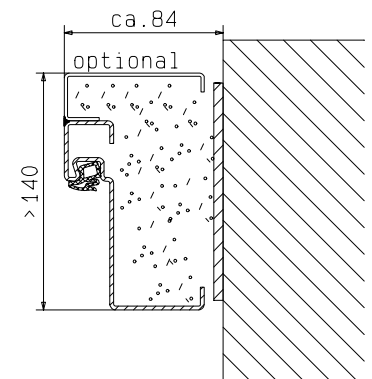
Zarge "Z 68"
optional



bekleitetes
Stahlprofil



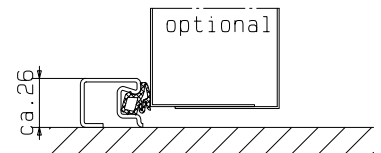
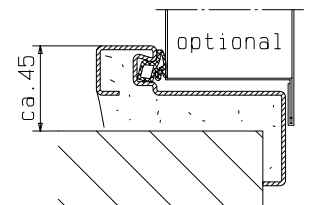
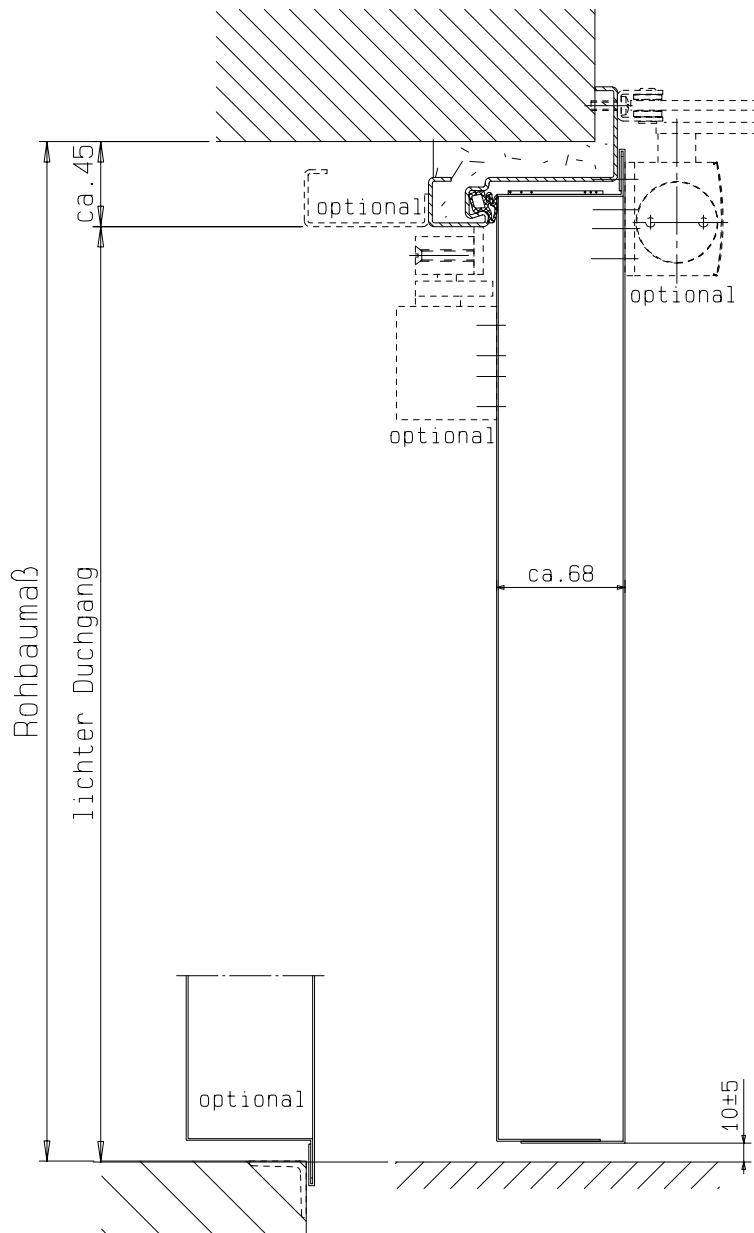
F90 Montagewand



FRANZEN
Feuerschutztüren

Gerhard-Welfer-Straße 7; 41812 Erkelenz

Einflügelige Feuerschutztür
EI₂120/E120/EW60
"System Schröders EIS-11"
Horizontalschnitt



Einbau- bzw. Zargenvarianten
siehe Horizontalschnitt



FRANZEN
Feuerschutztüren

Gerhard-Welter-Straße 7; 41812 Erkelenz

Einflügelige Feuerschutztür
E120/E120/EW60

"System Schröders EIS-11"

Vertikalschnitt