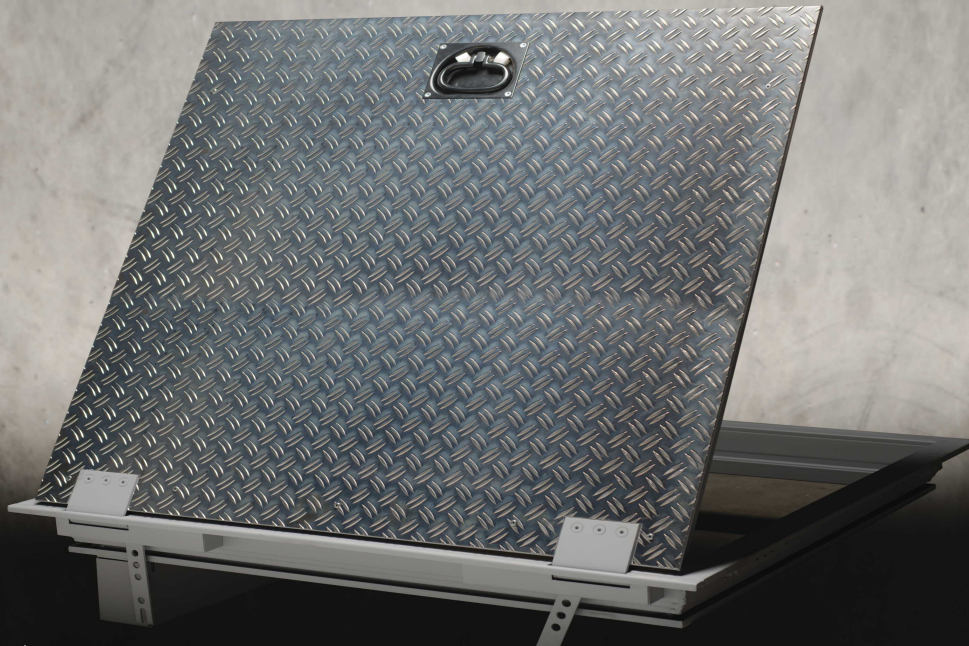




## Technical information



### Franzen DKN-1 / DKN-2 "System Schröders"

#### Internal and external ceiling flap single leaf (DKN-1) and double leaf (DKN-2)

-  optional      installation in internal ceilings  
acc. to DIN ENV 14351-2 (draft)
-  optional      installation in external ceilings  
acc. to DIN EN 14351-1 CE-marked
-  optional      walkable



## Performance characteristics

**Installation in internal ceilings**  
acc. to DIN ENV 14351-2 (draft)

or

**Installation in external ceilings**  
acc. to DIN EN 14351-1 CE-marked

**Combinable with additional performance characteristics:**

**Burglar resistance (optional)**  
up to RC4 acc. to DIN EN 1627 ff

**Acoustic performance (optional)**  
up to  $RW (C;Ctr) = 45 (-0;-3) \text{ dB}$   
acc. to EN ISO 10140-1 / EN ISO 10140-2 / EN ISO 717

**Thermal transmittance (optional)**  
 $UD\text{-value} \geq 1,2 \text{ W}/(\text{m}^2\text{K})$  acc.. to EN ISO 10077-1

**Air tightness (optional)**  
up to class 4 acc. to EN 12207 (up to 600 Pa)

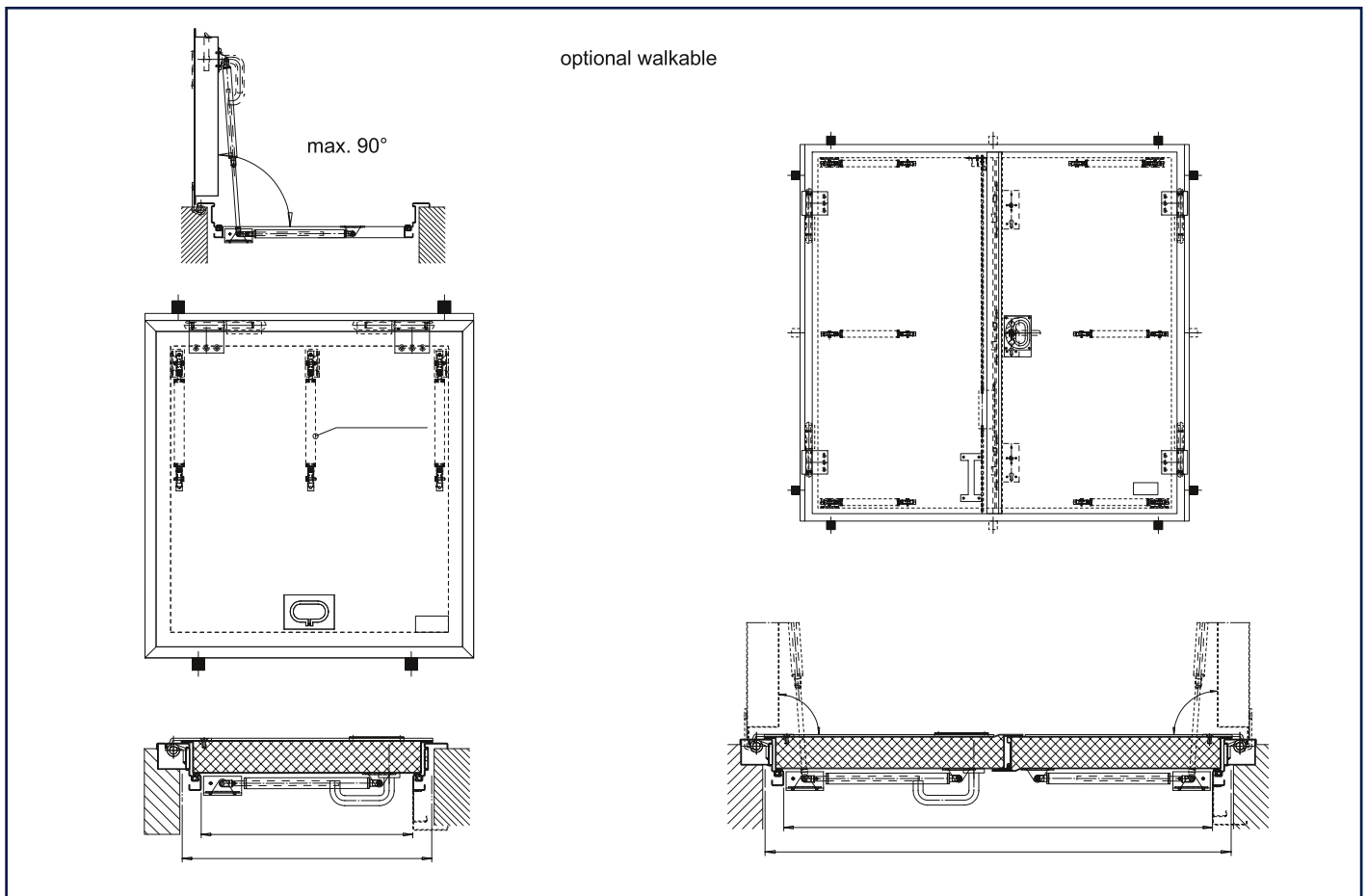
**Resistance to positive and negative pressure (optional)**  
up to 5.000 Pa acc. to DIN EN 12211

**Explosion protection (optional)**  
for installation in potentially explosive areas (ATEX)

**Performance characteristics combinable with further Franzen ceiling flap types "System Schröders":**

**Fire resistance (optional)**  
T90 acc. to DIN 4102-5 (single leaf)  
(fire ceiling lap Franzen THF)

**Smoke control (optional)**  
acc. to DIN 18095 RS-1 (single leaf)  
(fire ceiling lap Franzen THF)



## Technical data

### Dimensions single leaf (basic dimensions)

for performance characteristic airtightness, wind load resp.  
positive and negative pressure limited to

width up to 1,350 mm  
length up to 2,500 mm

### Dimensions double leaf (basic dimensions)

for performance characteristic airtightness, wind load resp.  
positive and negative pressure limited to

width up to 2,500 mm  
length up to 2,500 mm

### Flapleaf

leaf thickness 68 mm to 69 mm - smooth double-walled  
plate thickness 1.0 mm to 1.5 mm

thin rebate design

- optional thick rebate design
- optional insulation inlet full-face glued and pressed with cover plate, thus particularly plane and smooth door leaf

### Frame

frame system "ZNG" or "ZG" (see installation variants)

- elastic rubber seal
- corner frame
- optional enclosing frame
- optional block frame

### Hinges

concealed door hinges  
thus smooth surface without tripping edge

### Fittings

Top side: embedded folding ring shell  
Lower side: handle

### Locking (single leaf)

single locking according DIN 18250  
optional profile cylinder prepared (cylinder on-site)  
various locking systems possible

### Locking (double leaf)

active leaf  
mortise latch lock  
fixed leaf  
rebate shoot bolt  
various locking systems possible

### Walkability (optional)

with grating cover made of steel or aluminium  
with checker plate 3 mm made of steel or aluminium  
further designs for upper covering on request

### Opening assist

gas spring  
- adjusted to the flap weight  
- easy opening

### Installation

in concrete  
in aerated concrete  
in special ceilings on request

optional blunt installation in soffit

### Marking

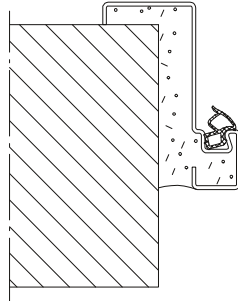
external ceiling flaps  
CE marked acc. to EN 14351-1

### Optional

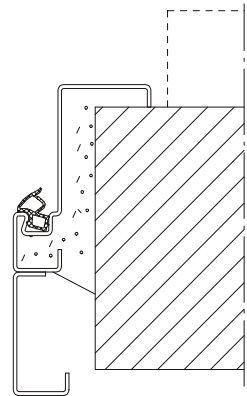
sock control  
powder coating in RAL colours  
special solutions acc. to request and customer requirements

# Installation variants

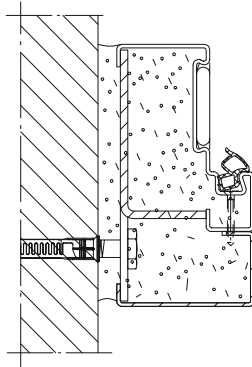
Installation in  
concrete



corner frame  
corner frame with  
supplementary frame

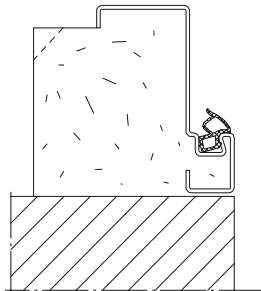


concrete  
- blunt installation

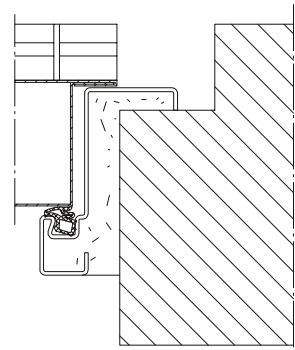
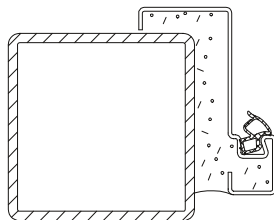


blockframe  
corner frame with  
supplementary frame

on concrete slab



optional walkable



**FRANZEN**  
Feuerschutztüren