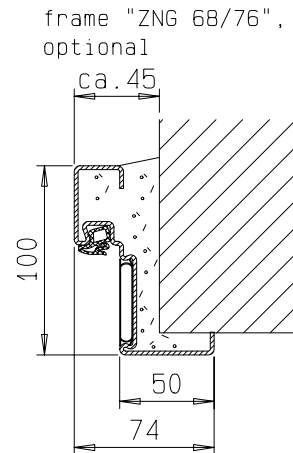
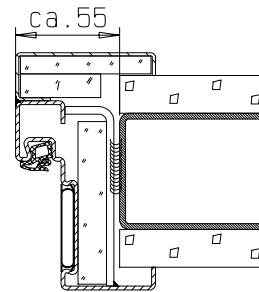


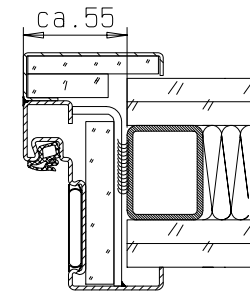
frame "ZNG 68/76"



detail of glazing
see vertical cross-section



insulated
steel profil EI 90



flexible wall EI90

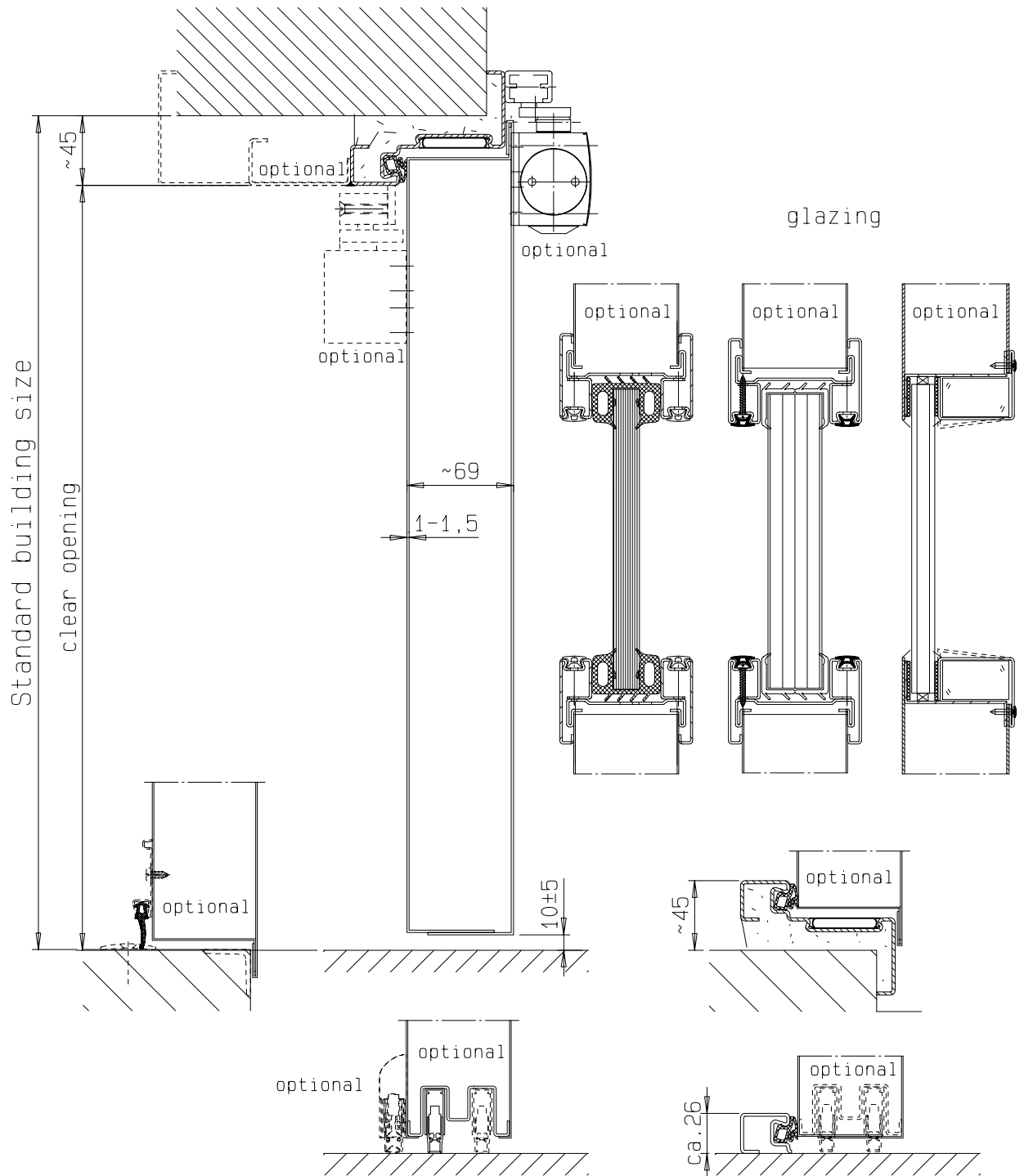


FRANZEN
Feuerschutztüren

Gerhard-Welter-Straße 7; 41812 Erkelenz

double leaf steel fire door
EI₂₃₀/E30/EW30-C5-S_a(S₂₀₀)
"System Schröders TSN-2"

horizontal cross-section



details of fitting or frame
see at horizontal cross-section



FRANZEN
Feuerschutztüren

Gerhard-Welter-Straße 7; 41812 Erkelenz

double leaf steel fire door
EI₂30/E30/EW30-C₅-S₂(S₂₀₀)
"System Schröders TSN-2"
vertical cross-section